



StyleNations

**ADICO**  
FINISH COLLECTION

STYLENATIONS.COM

# WOOD STAINS

APPLICABLE TO INDOOR SOLID WOOD SPECIES AND VENEER

\*\* Due to natural variations which occur in veneers and hardwoods, such as grain, texture and color, slight variations in color may occur between samples and actual furniture.\*\*



100 NATURAL BEECH



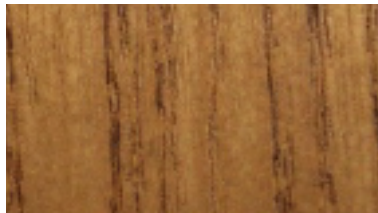
099 NATURAL OAK



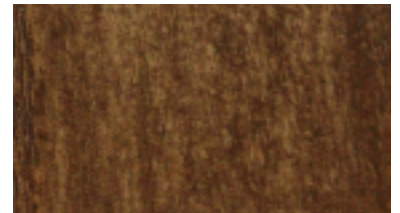
1129.N WALNUT



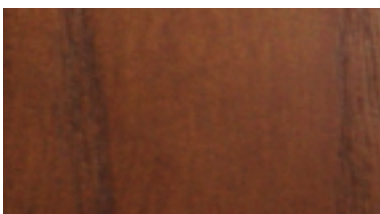
004 WALNUT 4



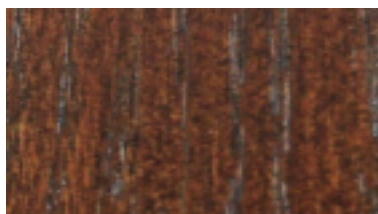
005 WALNUT 5



007 WALNUT 7



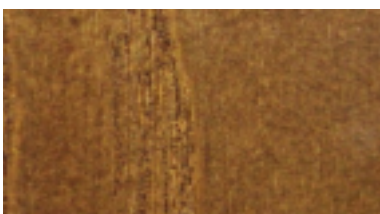
1126 GOLD WALNUT



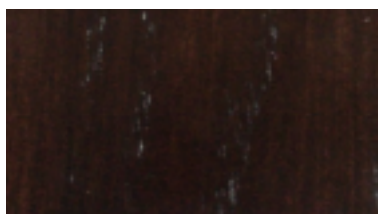
1125 MOCCA OAK



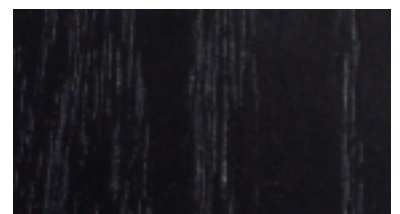
243 CHOCOLATE



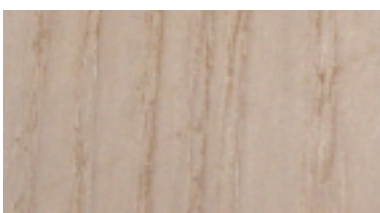
059 RUSTICAL



1124 WENGE



1301 BLACK



107 WHITE WASH

# WOOD STAINS

APPLICABLE TO INDOOR SOLID WOOD SPECIES AND VENEER

\*\* TO BE DISCONTINUED\*\*

\*\* Due to natural variations which occur in veneers and hardwoods, such as grain, texture and color, slight variations in color may occur between samples and actual furniture.\*\*

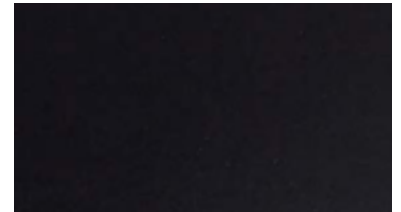
## BEECH WOOD



SD004 NATURAL BEECH



SD004-A WALNUT

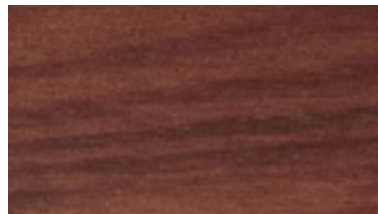


SD004-B BLACK

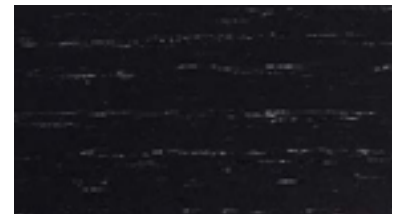
## ASH WOOD



SD002 NATURAL ASH



SD002-A WALNUT



SD002-B BLACK

## ASH VENEER



VE001 NATURAL ASH

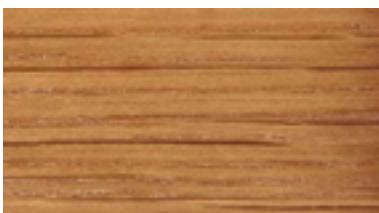


VE001-A WALNUT

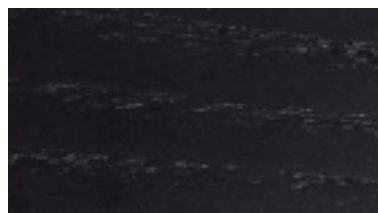


VE001-B BLACK

## WHITE OAK VENEER PREMIUM



VE002 WHITE OAK



VE002-B BLACK

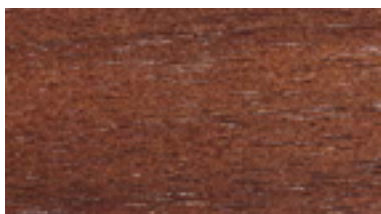
# WOOD STAINS

APPLICABLE TO INDOOR SOLID WOOD SPECIES AND VENEER

**\*\* TO BE DISCONTINUED\*\***

**\*\* Due to natural variations which occur in veneers and hardwoods, such as grain, texture and color, slight variations in color may occur between samples and actual furniture.\*\***

WALNUT VENEER  
PREMIUM



VE003 WALNUT

NATURAL WALNUT  
PREMIUM



SD001 WALNUT

# WOOD STAINS

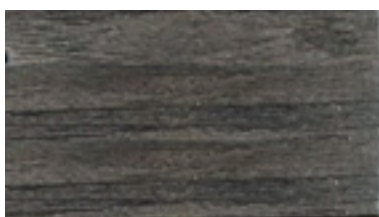
APPLICABLE TO OUTDOOR TEAK WOOD SPECIES



**\*\* Due to natural variations which occur in hardwoods, such as grain, texture and color, slight variations in color may occur between samples and actual furniture.\*\***



RUSTICAL 03



GREY 013



NATURAL TEAK



BROWN 030



BROWN 017



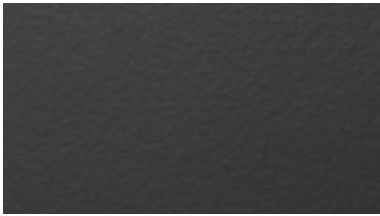
WALNUT

# POWDERCOAT

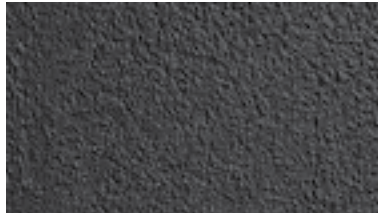
APPLICABLE TO INDOOR / OUTDOOR METALS



\*\* All colors available in matte, gloss and textured finish. Physical samples may only reflect 1 type of finish. Slight color variances may occur from sample to finished product due to material chosen for application.\*\*



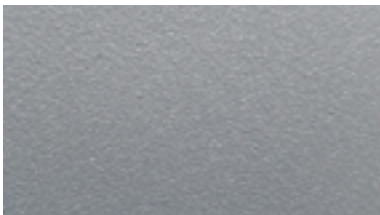
18007 BLACK  
MATTE



18002 BLACK  
TEXTURED



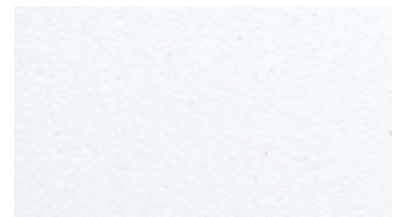
1752 CHARCOAL GRAY  
TEXTURED



18001 SLATE GRAY  
TEXTURED



1701 SOFT GREY  
MATTE



18004 WHITE  
TEXTURED



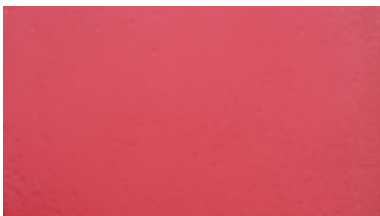
18005 WHITE  
MATTE



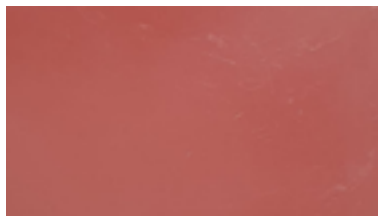
1710 OCEAN BLUE  
GLOSS



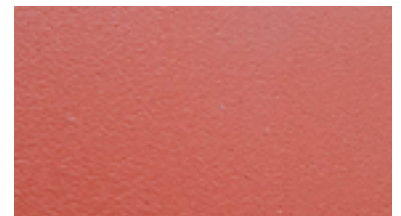
1702 LIGHT BLUE  
GLOSS



1708 RED  
MATTE



1712 RUST RED  
GLOSS



1753 ORANGE  
TEXTURED

# POWDERCOAT

APPLICABLE TO INDOOR / OUTDOOR METALS



\*\* All colors available in matte, gloss and textured finish. Physical samples may only reflect 1 type of finish. Slight color variances may occur from sample to finished product due to material chosen for application.\*\*



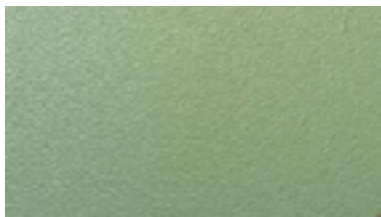
1707 YELLOW  
GLOSS



1704 SAGE GREEN  
GLOSS



1711 OLIVE GREEN  
GLOSS



1751 FERN GREEN  
TEXTURED



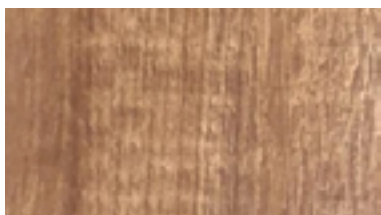
1705 FOREST GREEN  
GLOSS

# WOOD GRAIN WRAP

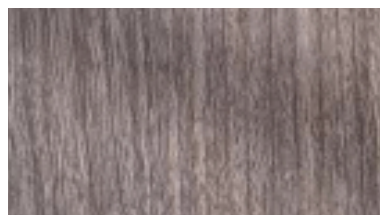
WOOD GRAIN APPLICABLE TO INDOOR / OUTDOOR ALUMINUM



\*\* Slight color variances may occur from sample to finished product. \*\*



90584+509-2



10035+715-3



3233+702-1

# BAMBOO POWDERCOAT

APPLICABLE TO INDOOR / OUTDOOR ALUMINUM AND STAINLESS STEEL



\*\* Slight color variances may occur from sample to finished product. \*\*



CR2022-001



CR2022-002



CR2022-003



CR2022-004



CR2022-005



CR2022-006

# STAINLESS STEEL

APPLICABLE TO STAINLESS STEEL FOR INDOOR / OUTDOR USE



**\*\* YCTJ-12 Champagen Brushed and YCTJ-03 Champagne Mirror are our standard finishes. Minimum order requirements applicable to all other YCTJ colors shown below. Please get in touch with a representative to confirm order requirements.\*\***



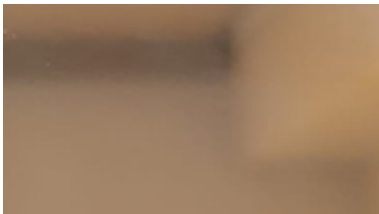
**\*\*YCTJ-12 CHAMPAGNE  
BRUSHED**



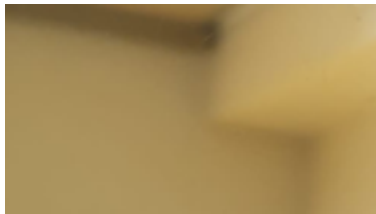
**\*\*YCTJ-03 CHAMPAGNE  
MIRROR**



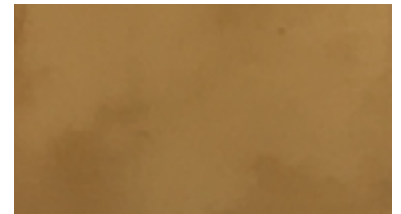
**YCTJ-13 ROSE  
BRUSHED**



**YCTJ-04 ROSE  
MIRROR**



**YCTJ-02 JAPAN GOLD  
MIRROR**



**YCTJ-11 JAPAN GOLD  
BRUSHED**



**YCTJ-18 TITANIUM  
BRUSHED**



**YCTJ-09 TITANIUM  
MIRROR**



# GENUINE BRASS

APPLICABLE TO TABLE EDGING AND FOOT RAILS FOR INDOOR / OUTDOOR USE



\*\* Due to the nature of genuine brass, when exposed to the elements a natural patina may occur over time.\*\*



101 NATURAL BRASS  
GENUINE BRASS



102 LIGHT ANTIQUE  
GENUINE BRASS



103 DARK ANTIQUE  
GENUINE BRASS

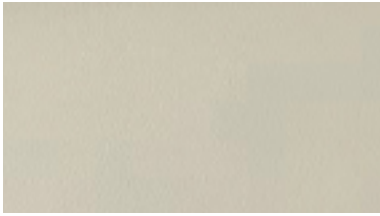


104 NATURAL ZINC  
GENUINE ZINC

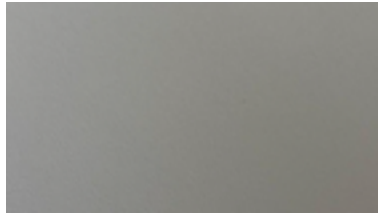
# VINYL

CAT A / INDOOR

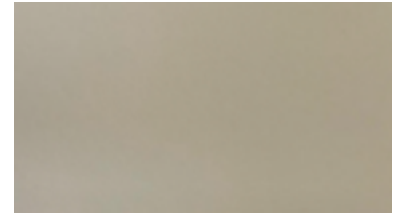
20% PU 80% PVC / Abrasion resistance:  $\geq 100000$ /cycles



SK82-1



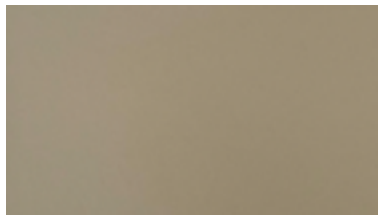
SK82-3



SK82-5



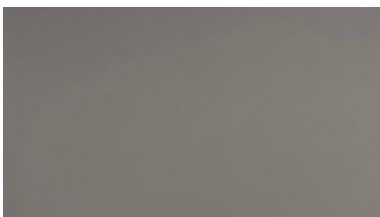
SK82-7



SK82-13



SK82-16



SK82-18



SK82-21



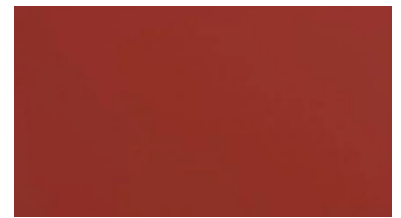
SK82-22



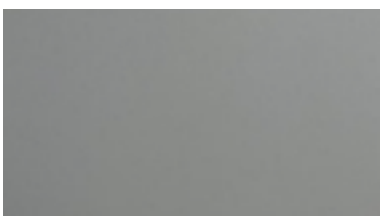
SK82-25



SK82-26



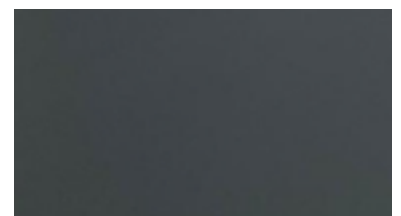
SK82-27



SK82-28



SK82-29



SK82-31

# VINYL

CAT A / INDOOR

20% PU 80% PVC / Abrasion resistance:  $\geq 100000$ /cycles

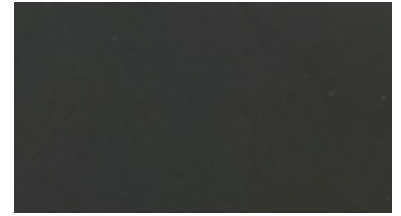
\*\* Discontinuing. Please check availability with a representative before specifying/ordering.\*\*



SK82-32



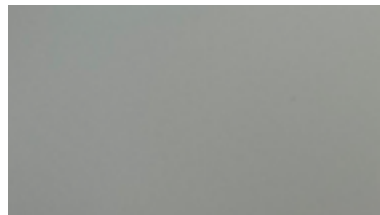
SK82-37



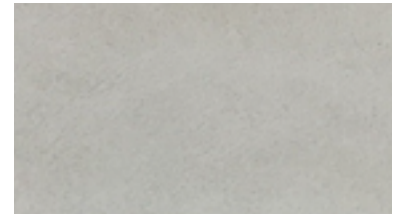
SK82-41



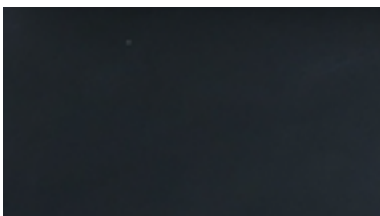
SK82-46



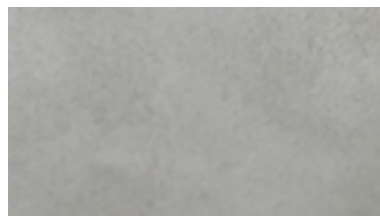
SK82-50



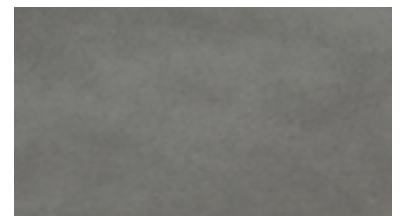
\*\*6500



\*\*6501



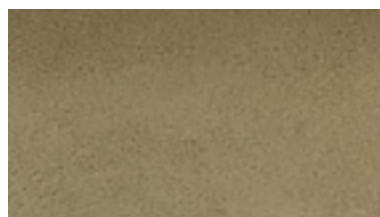
\*\*6503



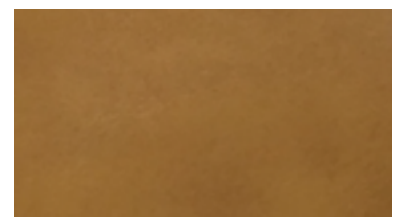
\*\*6504



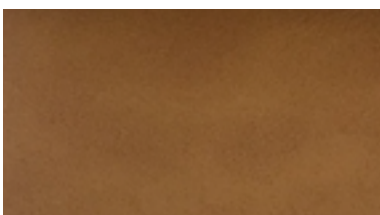
\*\*6505



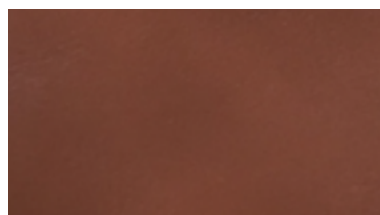
\*\*6506



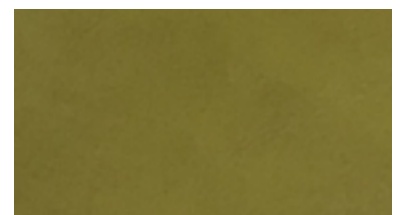
\*\*6507



\*\*6508



\*\*6509



\*\*6510

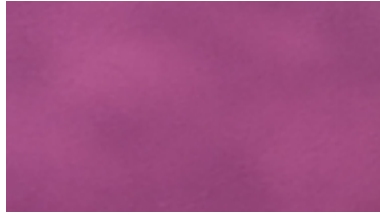
# VINYL

CAT A / INDOOR

**\*\* Discontinuing. Please check availability with a representative before specifying/ordering.\*\***



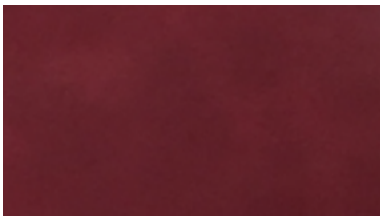
**\*\*6511**



**\*\*6512**



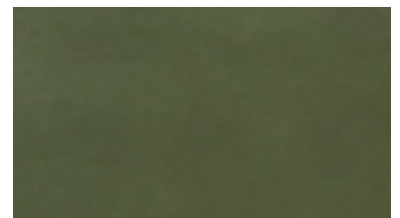
**\*\*6513**



**\*\*6515**



**\*\*6516**



**\*\*6517**



**\*\*6518**



**\*\*6519**



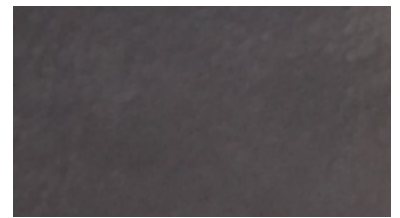
**\*\*6520**



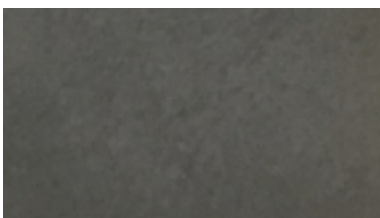
**\*\*6521**



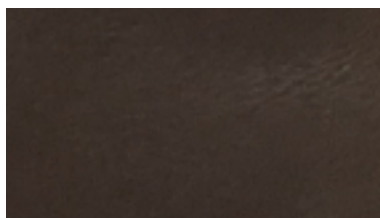
**\*\*6522**



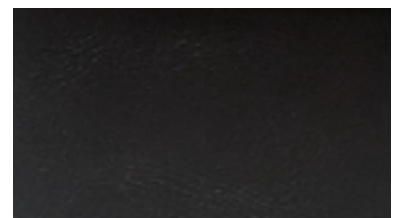
**\*\*6523**



**\*\*6524**



**\*\*6525**



**\*\*6526**

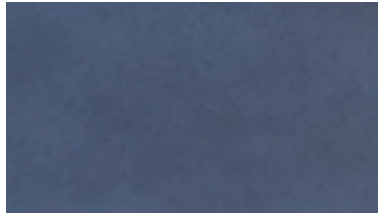
# VINYL

CAT A / INDOOR

**\*\* Discontinuing. Please check availability with a representative before specifying/ordering.\*\***



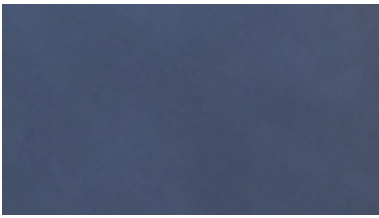
**\*\*6529**



**\*\*6531**



**\*\*6532**

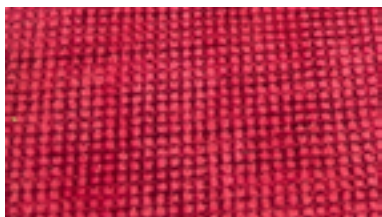


**\*\*6535**

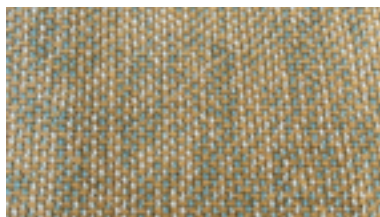
# FABRIC

CAT A / INDOOR

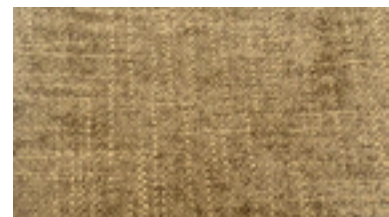
100%P / Abrasion resistance: exceeds 80000 double rubs



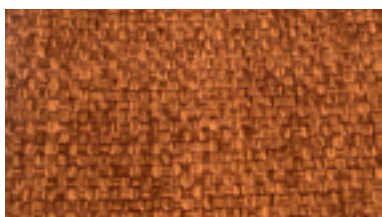
SJ55-9



SJ58-5



SJ97-12



SJ137-7



SJ138-3



SJ138-17



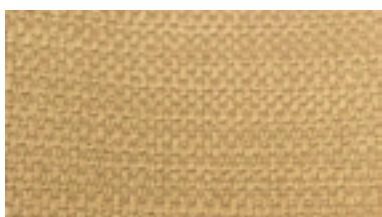
SJ150-5



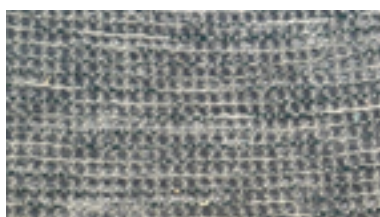
SJ169-1



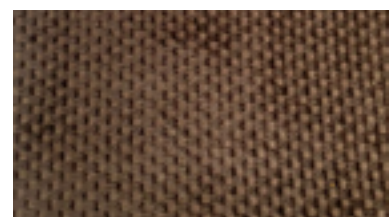
SJ170-17



SJ173-3



SJ182-12



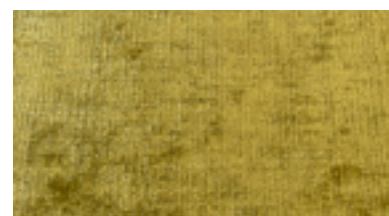
SJ185-13



SJ197-18



SJ197-34



SJ200-13

# FABRIC

CAT A / INDOOR

100%P / Abrasion resistance: exceeds 80000 double rubs



SJ209-2



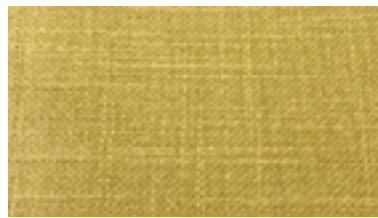
SJ209-7



SJ209-16



SJ213-25



SJ236-12



SJ236-24



SJ273-9



SJ279-5



SJ279-7



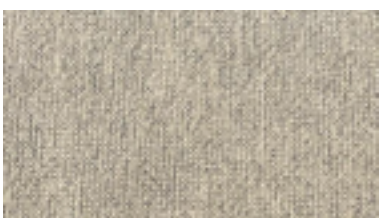
SJ279-12



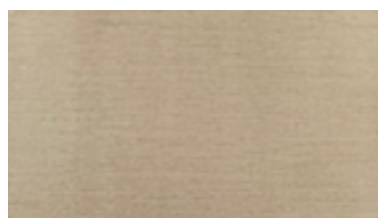
SJ279-13



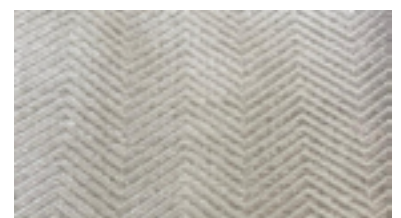
SJ279-27



SJ280-4



SJ281-2



SJ282-6

# FABRIC

CAT A / INDOOR

100%P / Abrasion resistance: exceeds 80000 double rubs



SJ295-1



SJ301-6



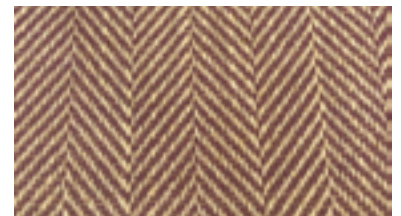
SJ326-1



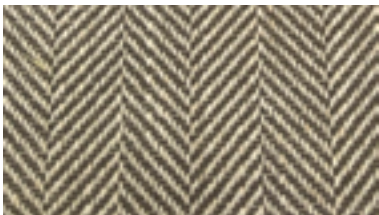
SJ326-26



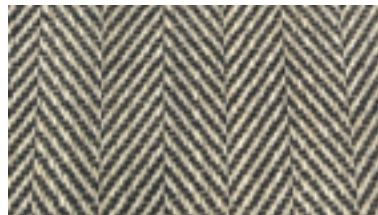
SJ326-35



SJ336-12



SJ336-14



SJ336-16



SJ365-9



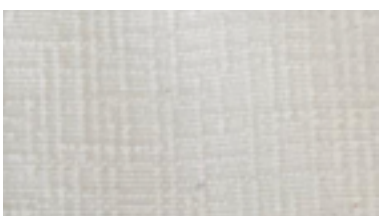
SJ382-21



SJ383-17



SJ387-4



SJ518-1



# GRADED IN PREMIUM FABRIC LINE

## ENDURANCE

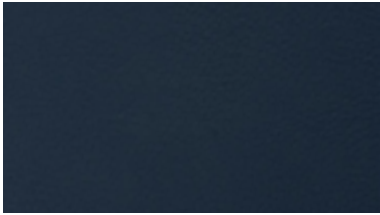
📄 **Content:** thermo pu 80%, poly 20%

🌿 **Environmental:** pfc free

✦✦ **Performance:** 10:1 bleach cleanable, insideout performance fabrics®, stain resistant

≡ **Abrasion Resistance:** 102,000 double rubs

🔥 **Flammability:** cal tb 117-2013 - pass, ufac - class 1, nfpa 260 - class 1



INK  
C-45282-101



OXIDE  
C-45282-103



JAVA  
C-45282-104



TWIG  
C-45282-105



DUNE  
C-45282-106



STONE  
C-45282-107



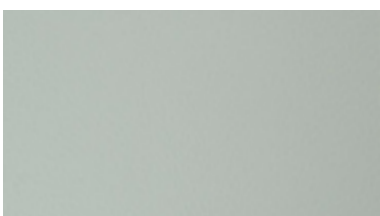
CRIMSON  
C-45282-108



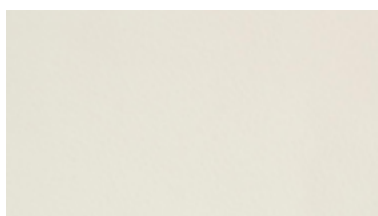
VAPOR  
C-45282-109



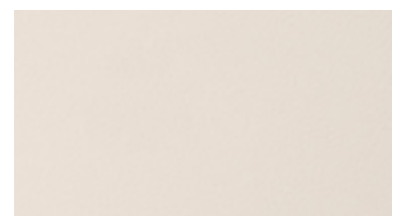
PEACOCK  
C-45282-110



FOG  
C-45282-111



IVORY  
C-45282-112



SAND  
C-45282-113

# GRADED IN PREMIUM FABRIC LINE

## ENDURANCE

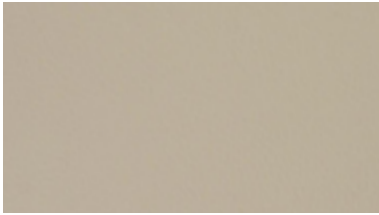
📄 **Content:** thermo pu 80%, poly 20%

🌿 **Environmental:** pfc free

✨ **Performance:** 10:1 bleach cleanable, insideout performance fabrics®, stain resistant

🔪 **Abrasion Resistance:** 102,000 double rubs

🔥 **Flammability:** cal tb 117-2013 - pass, ufac - class 1, nfpa 260 - class 1



PEWTER  
C-45282-114



SLATE  
C-45282-115



SHADOW  
C-45282-116



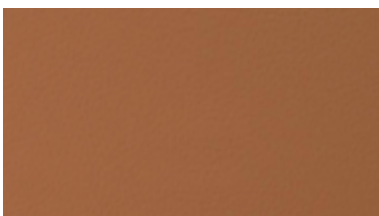
MINK  
C-45282-117



LAGOON  
C-45282-119



HORIZON  
C-45282-120



RUST  
C-45282-121

# GRADED IN PREMIUM FABRIC LINE

## JARDIN

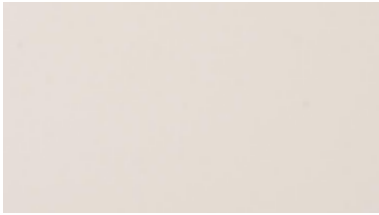
📄 **Content:** poly 100%, poly uv 100%

🌿 **Environmental:** greenguard gold

✨ **Performance:** 10:1 bleach cleanable, insideout performance fabrics®, stain resistant

🔪 **Abrasion Resistance:** 200,000 double rubs

🔥 **Flammability:** cal tb 117-2013 - pass, ufac - class 1, nfpa 260 - class 1



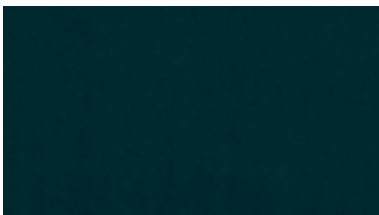
CLOUD  
C-45876-101



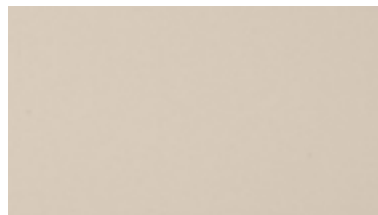
MUSHROOM  
C-45876-104



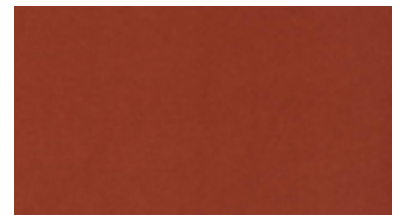
LEAF  
C-45876-105



PEACOCK  
C-45876-108



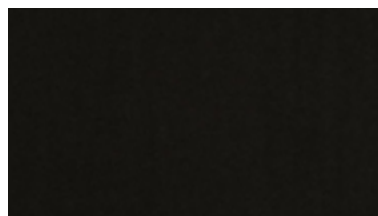
IVORY  
C-45876-111



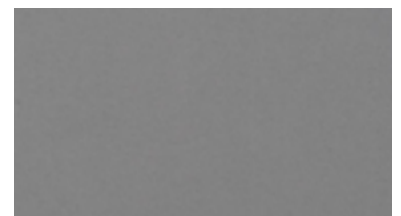
CORAL  
C-45876-112



CALYPSO  
C-45876-114



CHARCOAL  
C-45876-121

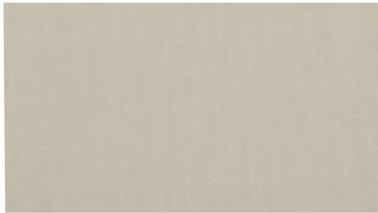


MIST  
C-45876-122

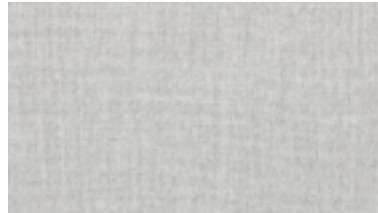
# GRADED IN PREMIUM FABRIC LINE

## SABLE

- 📄 **Content:** poly 100%, uv sol dye poly 100%
- 🌿 **Environmental:** pfc free, greenguard gold
- ✨ **Performance:** 10:1 bleach cleanable, insideout performance fabrics®, stain resistant
- 🛡️ **Abrasion Resistance:** 63,000 double rubs
- 🔥 **Flammability:** cal tb 117-2013 - pass, ufac - class 1, nfpa 260 - class 1



FLAX  
C-76725-102



DOVE  
C-76725-103



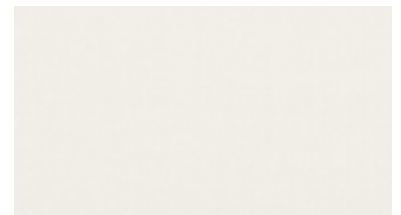
PEWTER  
C-76725-104



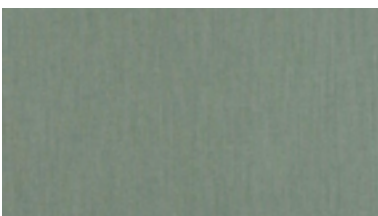
GRAPHITE  
C-76725-107



STEEL  
C-76725-109



IVORY  
C-76725-111



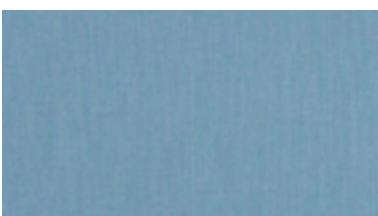
JADE  
C-76725-113



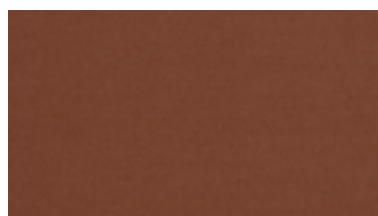
LAGOON  
C-76725-115



STORM  
C-76725-116



HARBOUR  
C-76725-117



DESERT  
C-76725-120

# GRADED IN PREMIUM FABRIC LINE

## RECKON

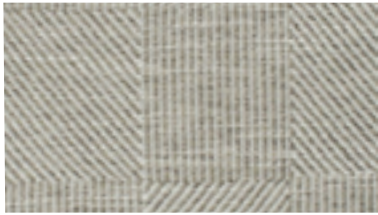
📄 **Content:** poly(uv) 60%, olefin(uv) 40%

🌿 **Environmental:** pfc free, greenguard gold, lbc red list free

✨ **Performance:** 10:1 bleach cleanable, insideout performance fabrics®, stain resistant

🔧 **Abrasion Resistance:** 102,000 double rubs

🔥 **Flammability:** cal tb 117-2013 - pass, ufac - class 1, nfpa 260 - class 1



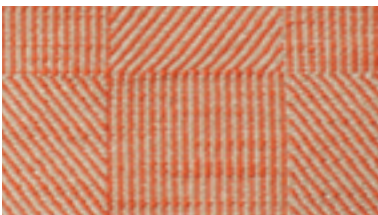
GRAPH PAPER  
F-0257146-01110001



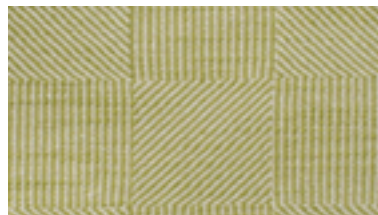
SANDBAR  
F-0257146-01110014



SANDDUNE  
F-0257146-01110015



FLAMINGO  
F-0257146-01110018



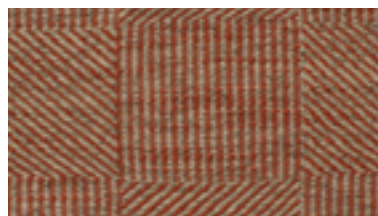
NEW LEAF  
F-0257146-01110021



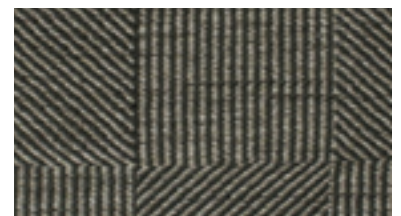
REFRESH  
F-0257146-01110022



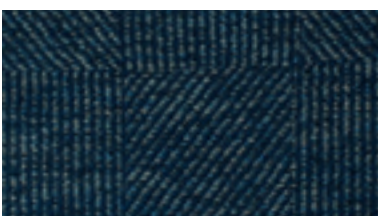
POLISHED  
F-0257146-01130012



TERRACOTTA  
F-0257146-01130026



PINSTRIPED  
F-0257146-01150002



CELESTIAL  
F-0257146-01170004

# GRADED IN PREMIUM FABRIC LINE

## ARBRE

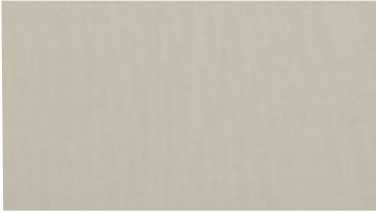
📄 **Content:** poly(uv) 60%, olefin(uv) 40%

🌿 **Environmental:** pfc free, greenguard gold, lbc red list free

✨ **Performance:** 10:1 bleach cleanable, insideout performance fabrics®, stain resistant

🔪 **Abrasion Resistance:** 102,000 double rubs

🔥 **Flammability:** cal tb 117-2013 - pass, ufac - class 1, nfpa 260 - class 1



SNOW

F-N001868-01110002



PEARL

F-N001868-01120024



VANILLA

F-N001868-01120025



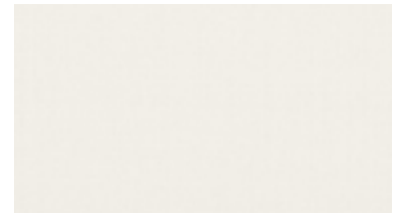
SISAL

F-N001868-01130029



TWINE

F-N001868-01140026



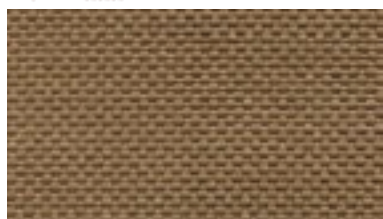
HORIZON

F-N001868-01150016

# OUTDOOR FABRIC

CAT A / OUTDOOR

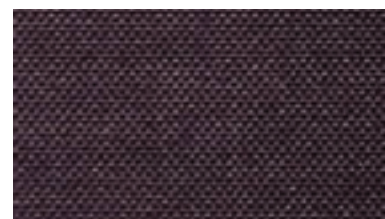
100%P / Abrasion resistance: exceeds 80000 double rubs



5201-04



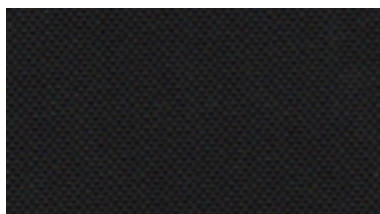
5201-07



5201-09



5201-13



5201-14



5201-28



5201-29



5201-38



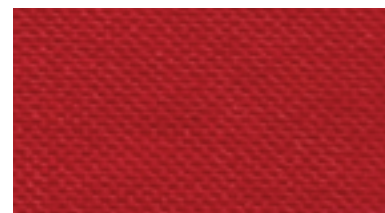
5201-46



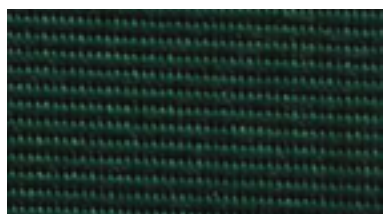
5201-80



5201-82



5201-99



7101-31

# OUTDOOR FABRIC

CAT A / OUTDOOR

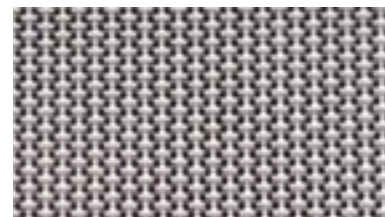
100%P / Abrasion resistance: exceeds 80000 double rubs



7101-61



7101-64



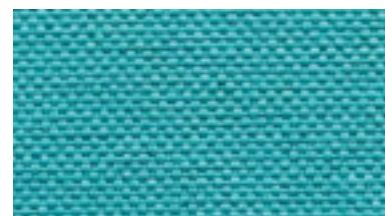
7101-82



5201-00



5201-56



1451-13



7101-76



7101-20



1451-09



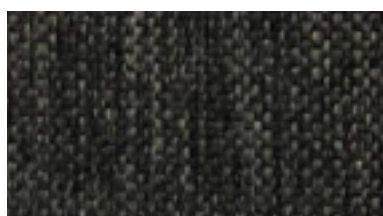
5201-30



7101-65



7101-62



7101-11



5201-97



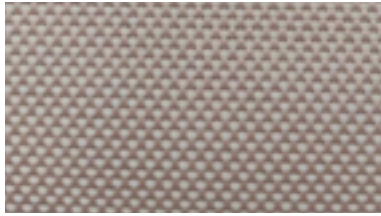
THS-004



# OUTDOOR FABRIC

CAT A / OUTDOOR

100%P / Abrasion resistance: exceeds 80000 double rubs



1451-23



1451-26



99-1



99-3



99-13



99-9-B



99-10-B



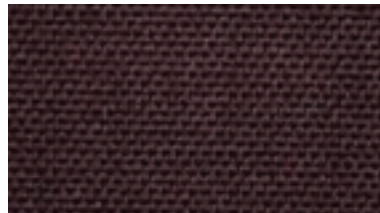
99-11-B



08019



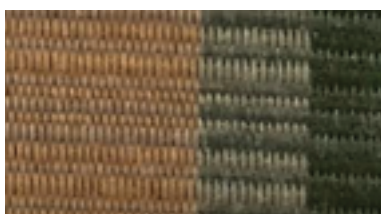
08118



08115



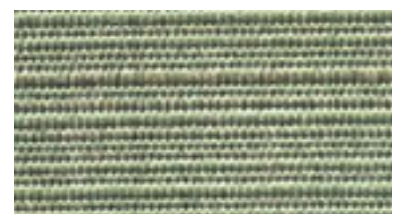
08030



08098



08121

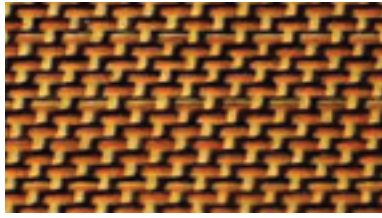


08144

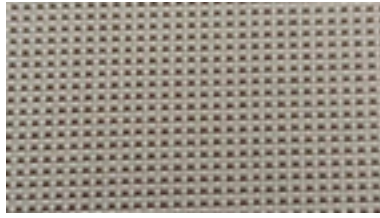
# OUTDOOR FABRIC

CAT A / OUTDOOR

100%P / Abrasion resistance: exceeds 80000 double rubs



08154



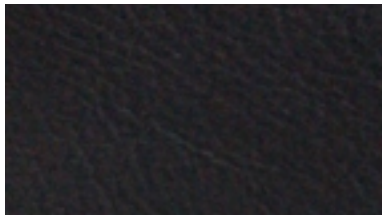
12026B



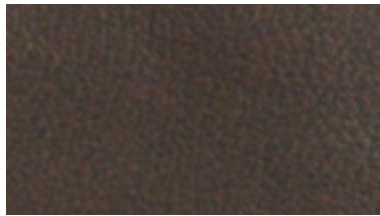
7101-81

# LEATHER

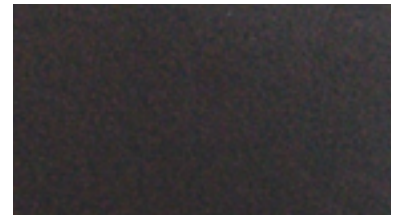
CAT C / INDOOR



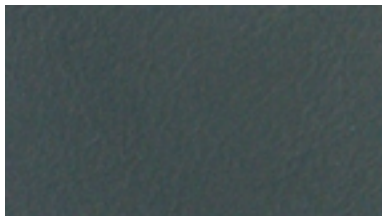
5881



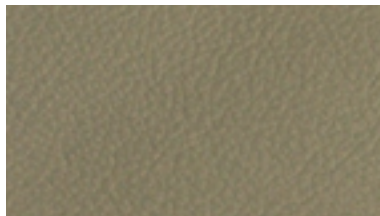
5885



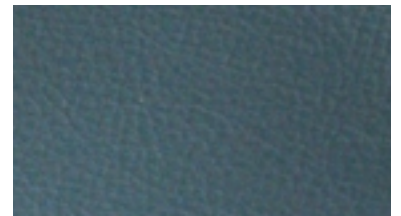
5887



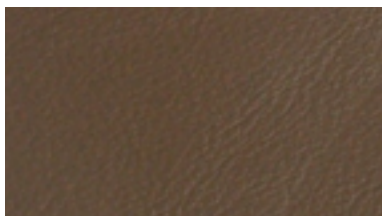
5889



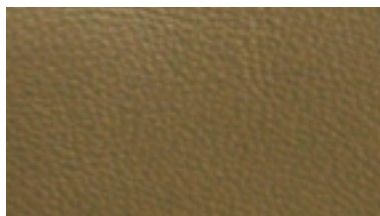
9728



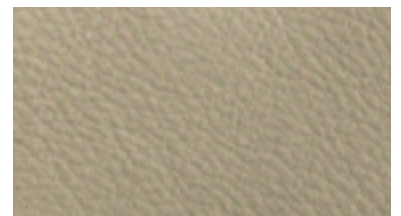
58880



58885



58887



58888

# LEATHER

CAT C / INDOOR



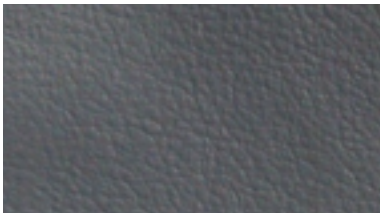
58889



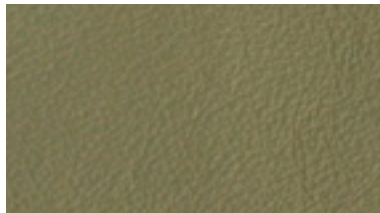
58891



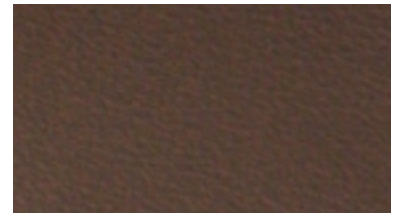
58892



58893



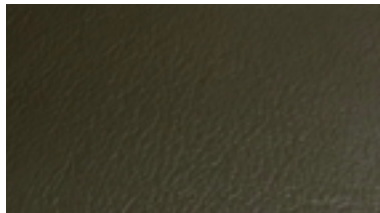
58895



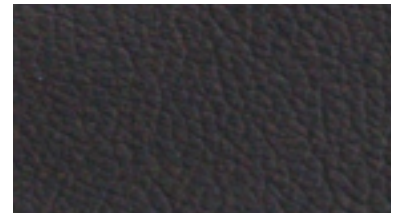
58896



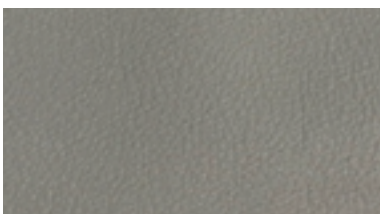
58897



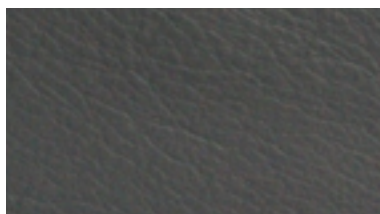
58898



58899



C-01



C-02



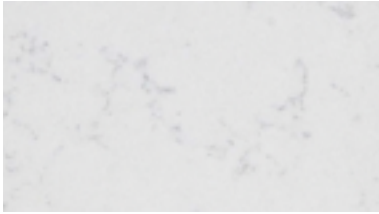
C-04

# QUARTZ

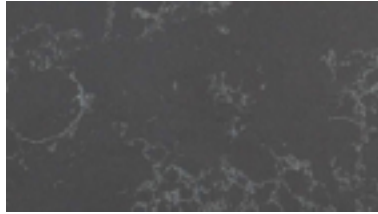
INDOOR / OUTDOOR



\*\* All colors available in matte or gloss finish. Physical samples may only reflect 1 type of finish. Slight color and grain variances may occur from sample to finished product due to the nature of Quartz.\*\*



WHITE



GREY



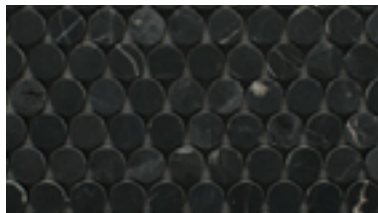
BLACK

# PENNY TILES

INDOOR / OUTDOOR



WHITE



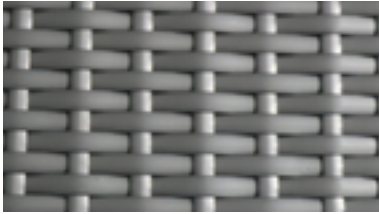
BLACK

# RATTAN

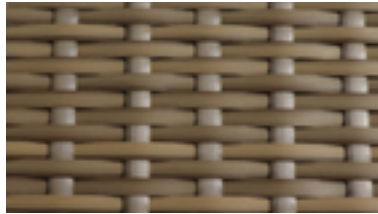
SYNTHETIC INDOOR / OUTDOOR



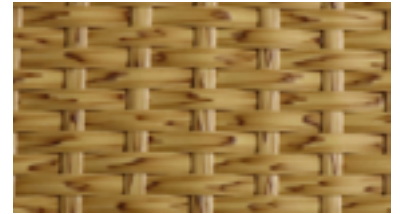
\*\* Samples shown are for color reference only. Size, shape and weave will be dependant on chosen product. \*\*



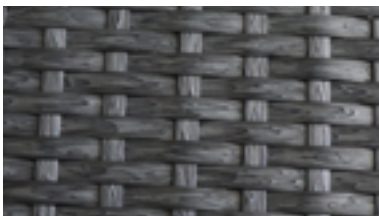
HD 14002



HD 15004



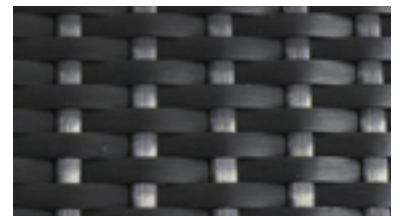
HD 17003



HD 17005



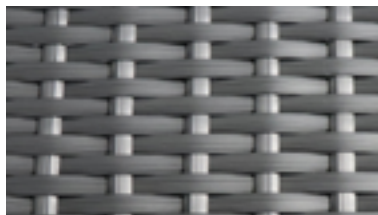
DS 0027



DS 0030



DS 0036



DS 0043



DS 0059



HD 001



HD 14001

# ROPES

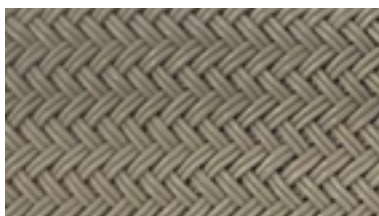
INDOOR / OUTDOOR



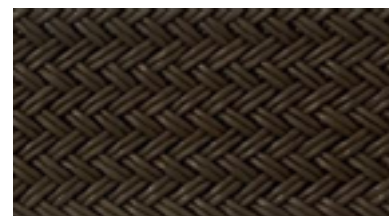
\*\* Samples shown are for color reference only. Size, shape and weave will be dependant on chosen product. \*\*



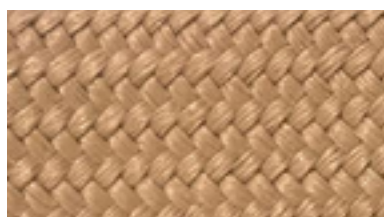
TD8-001



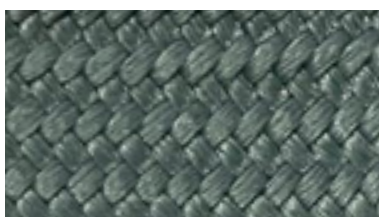
TD8-003



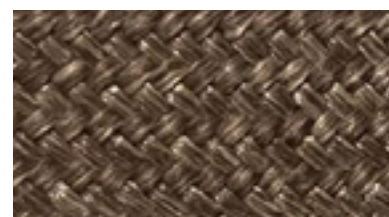
TD8-005



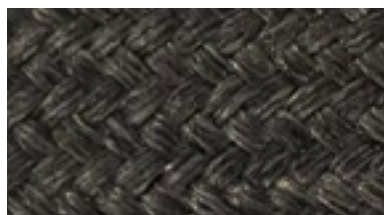
DL8-003



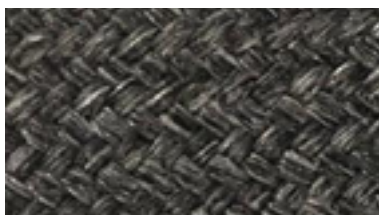
DL8-002



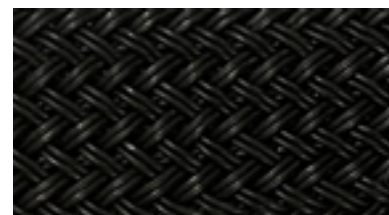
DL8-005



DL8-007



OL8-007



BLACK



StyleNations

*get in touch*

HELLO@STYLENATIONS.COM

+1 704 469 5066

STYLENATIONS.COM

